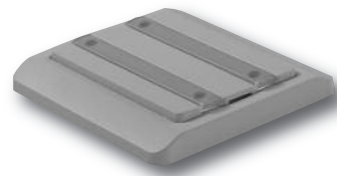


BOW-WLS4

- smart-house transmitter for building automation applications**
- 4 individually programmable pushbutton inputs**
- Channel coding by BGP-COD-BAT**
- Wall mounting**
- Range up to 100 m in open air**
- 3 V battery supply (CR2032)**
- Battery life: up to 5 years at normal use**



INPUT SPECIFICATIONS

Wireless push-button	
Transmission frequency	868 MHz

SUPPLY SPECIFICATIONS

Power supply	Battery: CR2032
---------------------	-----------------

GENERAL SPECIFICATIONS

Channel coding	By BGP-COD-BAT and special cable: GAP-TPH-CAB
Out 1 - 4	Pushbutton 1 - 4
Enclosure	(LK OPUS)
Environment	
Degree of protection	IP 20
Pollution degree	3 (IEC 60664)

Operating temperature	0 - 50 °C/32 - 122°F
Storage temperature	-20 - 70°C/-4 - 158°F
Humidity (non condensing)	20 - 80%
Weight	50 g - without battery
Dimensions	66 x 66 x 11 mm (including frame)

MODE OF OPERATION

The BOW-WLS4 light switch is designed for base unit BH4-WBU-230 and will only function with this unit.

The wireless BOW-WLS4 light switches are programmed as standard light switches using a BGP-COD-BAT (see data sheet for this unit).

The communication between BOW-WLS4 light switches and the BH4-WBU-230 base is established in the following way:

- Push the "Mode" button on the BH4-WBU-230 base until the red

LED indicates association.

- Push the pushbutton on the BOW-WLS4 light switch module that you want to associate with the BH4-WBU-230 base.

Once the association is complete, all 4 LEDs will light up briefly (approx. 1 second).

If the association fails, e.g. because the range is exceeded, all LEDs in the light switch module will light up simultaneously for approx. 500 ms. This also occurs if, under normal circumstances, it is not possible to establish connection

between the BH4-WBU-230 base and the BOW-WLS4 light switch modules.

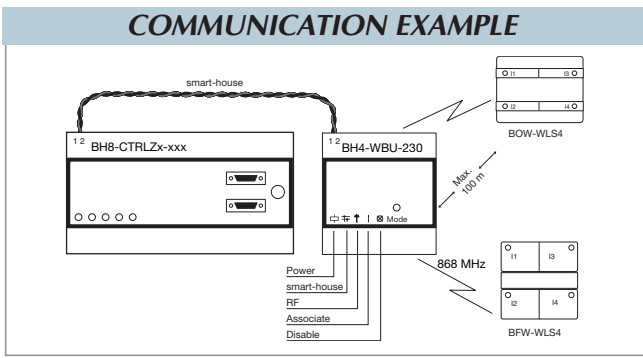
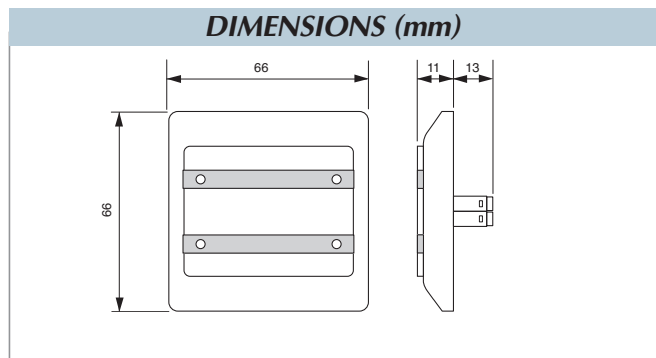
It is possible to disable the communication between the BH4-WBU-230 base and all the modules with which it is associated.

- Push the "Mode" button on the BH4-WBU-230 base until the red "Disable" LED is lit. This means that there is no connection between the BH4-WBU-230 base and its associations. To reestablish the connection, push "Mode" until neither

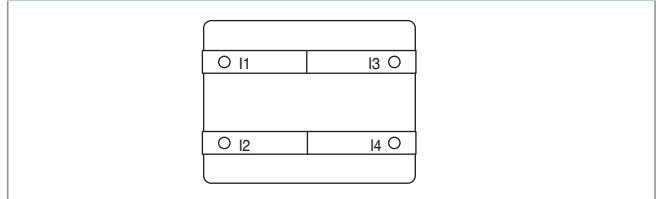
"Associate" or "Deactivate" are lit. Under normal circumstances, the "Supply" and "smart-house" LEDs will be lit continuously, whereas the LED for "Communication" only blinks briefly when you push an associated BOW-WLS4 light switch.

The LEDs always follow their allocated pushbutton and cannot be programmed individually or removed.

The LED indication provides confirmation that the communication is successful.



PUSH BOTTON/LED ALLOCATION



TYPE SELECTION

Supply	Colour	Ordering no.
Battery supply	White	BOW-WLS4
	Light grey	BOG-WLS4

ACCESSORIES

Programming cable to BGP-COD-BAT GAP-TPH-CAB